



## **Labour Force Survey Statistics January 2023**

## CALGARY CMA

**Table 14-10-0380-02 (282-0135) Labour force survey estimates (LFS), by census metropolitan area based on 2011 census boundaries, 3-month moving average, seasonally adjusted, monthly (persons unless otherwise noted)**

	January 2022	December 2022	January 2023	# Change December 2022 - January 2023	% Change December 2022 - January 2023	# Change January 2022 - January 2023	% Change January 2022 - January 2023
Population (x 1,000)	1,277.9	1,314.3	1,318.4	4.1	0.3%	40.5	3.2%
Labour force (x 1,000)	903.0	938.9	933.0	-5.9	-0.6%	30.0	3.3%
Employment (x 1,000)	826.0	879.9	871.4	-8.5	-1.0%	45.4	5.5%
Unemployment (x 1,000)	77.0	59.0	61.6	2.6	4.4%	-15.4	-20.0%
Unemployment rate (rate)	8.5%	6.3%	6.6%	0.3%		-1.9%	
Participation rate (rate)	70.7%	71.4%	70.8%	-0.6%		0.1%	
Employment rate (rate)	64.6%	66.9%	66.1%	-0.8%		1.5%	

## CALGARY CMA

**Table 14-10-0378-01 (282-0128) Labour force survey estimates (LFS), by census metropolitan area based on 2011 census boundaries, 3-month moving average, unadjusted for seasonality, monthly (persons unless otherwise noted)**

	January 2022	December 2022	January 2023	# Change December 2022 - January 2023	% Change December 2022 - January 2023	# Change January 2022 - January 2023	% Change January 2022 - January 2023
Population (x 1,000)	1,277.9	1,314.3	1,318.4	4.1	0.3%	40.5	3.2%
Labour force (x 1,000)	900.1	941.5	931.3	-10.2	-1.1%	31.2	3.5%
Employment (x 1,000)	828.8	886.5	871.0	-15.5	-1.7%	42.2	5.1%
Full-time employment (x 1,000)	669.7	738.3	722.5	-15.8	-2.1%	52.8	7.9%
Part-time employment (x 1,000)	159.2	148.2	148.5	0.3	0.2%	-10.7	-6.7%
Unemployment (x 1,000)	71.3	55.0	60.3	5.3	9.6%	-11.0	-15.4%
Not in labour force (x 1,000)	377.8	372.8	387.0	14.2	3.8%	9.2	2.4%
Unemployment rate (rate)	7.9%	5.8%	6.5%	0.7%		-1.4%	
Participation rate (rate)	70.4%	71.6%	70.6%	-1.0%		0.2%	
Employment rate (rate)	64.9%	67.5%	66.1%	-1.4%		1.2%	

## CALGARY CMA

**Table: 14-10-0397-01 (282-0130) Labour force survey estimates (LFS), employment by census metropolitan area based on 2011 census boundaries and North American Industry Classification System (NAICS), 3-month moving average, unadjusted for seasonality, monthly (persons x 1,000)**

	January 2022	December 2022	January 2023	# Change December 2022 - January 2023	% Change December 2022 - January 2023	# Change January 2022 - January 2023	% Change January 2022 - January 2023
Total Employed - All Industries	835.7	886.5	871.0	-15.5	-1.7%	35.3	4.2%
Goods-Producing Sector	179.3	160.3	155.5	-4.8	-3.0%	-23.8	-13.3%
Agriculture	3.4	3.7	3.0	-0.7	-18.9%	-0.4	-11.8%
Forestry, Fishing, Mining, Quarrying, Oil and Gas	50.9	43.5	45.1	1.6	3.7%	-5.8	-11.4%
Utilities	7.2	7.8	7.5	-0.3	-3.8%	0.3	4.2%
Construction	82.3	74.0	70.6	-3.4	-4.6%	-11.7	-14.2%
Manufacturing	35.4	31.3	29.3	-2.0	-6.4%	-6.1	-17.2%
Services-Producing Sector	656.4	726.2	715.5	-10.7	-1.5%	59.1	9.0%
Wholesale & Retail Trade	131.3	130.1	125.0	-5.1	-3.9%	-6.3	-4.8%
Transportation and Warehousing	54.1	65.4	61.4	-4.0	-6.1%	7.3	13.5%
Finance, Insurance, Real Estate and Leasing	55.2	57.4	54.5	-2.9	-5.1%	-0.7	-1.3%
Professional, Scientific and Technical Services	98.1	122.1	122.8	0.7	0.6%	24.7	25.2%
Business, Building and Other Support Services	25.6	26.3	26.1	-0.2	-0.8%	0.5	2.0%
Educational Services	60.9	63.9	63.8	-0.1	-0.2%	2.9	4.8%
Health Care and Social Assistance	111.5	123.9	121.9	-2.0	-1.6%	10.4	9.3%
Information, Culture and Recreation	31.5	29.6	30.8	1.2	4.1%	-0.7	-2.2%
Accommodation and Food Services	40.2	49.0	47.3	-1.7	-3.5%	7.1	17.7%
Other Services	22.2	28.4	31.8	3.4	12.0%	9.6	43.2%
Public Administration	25.9	30.1	30.1	0.0	0.0%	4.2	16.2%

## Province of Alberta

**Table: 14-10-0287-01 (282-0087) Labour force survey estimates (LFS), by sex and age group, seasonally adjusted, monthly (persons unless otherwise noted)**

	January 2022	December 2022	January 2023	# Change December 2022 - January 2023	% Change December 2022 - January 2023	# Change January 2022 - January 2023	% Change January 2022 - January 2023
Population (x 1,000)	3,573.9	3,666.2	3,678.4	12.2	0.3%	104.5	2.9%
Labour force (x 1,000)	2,501.3	2,552.4	2,585.6	33.2	1.30%	84.3	3.4%
Employment (x 1,000)	2,330.3	2,409.0	2,429.7	20.7	0.9%	99.4	4.3%
Employment full-time (x 1,000)	1,885.4	1,970.6	1,977.4	6.8	0.3%	92.0	4.9%
Employment part-time (x 1,000)	444.9	438.5	452.3	13.8	3.1%	7.4	1.7%
Unemployment (x 1,000)	171.0	143.3	155.9	12.6	8.8%	-15.1	-8.8%
Unemployment rate (rate)	6.8%	5.6%	6.0%	0.4%		-0.8%	
Participation rate (rate)	70.0%	69.6%	70.3%	0.7%		0.3%	
Employment rate (rate)	65.2%	65.7%	66.1%	0.4%		0.9%	

## Province of Alberta

**Table: 14-10-0355-01 (282-0088) Labour force survey estimates (LFS), employment by North American Industry Classification System (NAICS), seasonally adjusted, monthly (persons x 1,000)**

	January 2022	December 2022	January 2023	# Change December 2022 - January 2023	% Change December 2022 - January 2023	# Change January 2022 - January 2023	% Change January 2022 - January 2023
Total Employed - All Industries	2,330.3	2,409.0	2,429.7	20.7	0.9%	99.4	4.3%
Goods-Producing Sector	566.1	562.6	576.2	13.6	2.4%	10.1	1.8%
Agriculture	40.5	47.2	49.1	1.9	4.0%	8.6	21.2%
Forestry, Fishing, Mining, Quarrying, Oil and Gas	145.8	128.4	131.1	2.7	2.1%	-14.7	-10.1%
Utilities	16.9	16.7	20.1	3.4	20.4%	3.2	18.9%
Construction	233.6	234.6	239.0	4.4	1.9%	5.4	2.3%
Manufacturing	129.3	135.7	136.8	1.1	0.8%	7.5	5.8%
Services-Producing Sector	1,764.2	1,846.4	1,853.5	7.1	0.4%	89.3	5.1%
Wholesale & Retail Trade	364.1	358.7	368.0	9.3	2.6%	3.9	1.1%
Transportation and Warehousing	131.1	143.6	132.8	-10.8	-7.5%	1.7	1.3%
Finance, Insurance, Real Estate and Leasing	123.4	123.8	125.4	1.6	1.3%	2.0	1.6%
Professional, Scientific and Technical Services	197.4	241.2	251.2	10.0	4.1%	53.8	27.3%
Business, Building and Other Support Services	69.0	74.7	72.7	-2.0	-2.7%	3.7	5.4%
Educational Services	168.7	168.5	169.0	0.5	0.3%	0.3	0.2%
Health Care and Social Assistance	316.4	308.9	312.8	3.9	1.3%	-3.6	-1.1%
Information, Culture and Recreation	78.4	82.6	81.4	-1.2	-1.5%	3.0	3.8%
Accommodation and Food Services	117.7	126.9	124.1	-2.8	-2.2%	6.4	5.4%
Other Services	91.1	104.7	100.1	-4.6	-4.4%	9.0	9.9%
Public Administration	106.8	112.8	116.1	3.3	2.9%	9.3	8.7%

## CANADA

**Table: 14-10-0287-01 (282-0087) Labour force survey estimates (LFS), by sex and age group, seasonally adjusted, monthly (persons unless otherwise noted)**

	January 2022	December 2022	January 2023	# Change December 2022 - January 2023	% Change December 2022 - January 2023	# Change January 2022 - January 2023	% Change January 2022 - January 2023
Population (x 1,000)	31,546.8	32,007.3	32,070.4	63.1	0.2%	523.6	1.7%
Labour force (x 1,000)	20,517.9	20,925.8	21,078.3	152.5	0.73%	560.4	2.7%
Employment (x 1,000)	19,176.1	19,882.3	20,032.3	150.0	0.754%	856.2	4.5%
Employment full-time (x 1,000)	15,714.6	16,315.9	16,437.0	121.1	0.7%	722.4	4.6%
Employment part-time (x 1,000)	3,461.5	3,566.4	3,595.3	28.9	0.8%	133.8	3.9%
Unemployment (x 1,000)	1,341.8	1,043.4	1,046.0	2.6	0.2%	-295.8	-22.0%
Unemployment rate (rate)	6.5%	5.0%	5.0%	0.0%		-1.5%	
Participation rate (rate)	65.0%	65.4%	65.7%	0.3%		0.7%	
Employment rate (rate)	60.8%	62.1%	62.5%	0.4%		1.7%	

## CANADA

**Table: 14-10-0355-01 (282-0088) Labour force survey estimates (LFS), employment by North American Industry Classification System (NAICS), seasonally adjusted, monthly (persons x 1,000)**

	January 2022	December 2022	January 2023	# Change December 2022 - January 2023	% Change December 2022 - January 2023	# Change January 2022 - January 2023	% Change January 2022 - January 2023
Total Employed - All Industries	19,286.0	19,882.4	20,032.3	149.9	0.8%	746.3	3.9%
Goods-Producing Sector	4,003.4	4,115.5	4,140.9	25.4	0.6%	137.5	3.4%
Agriculture	250.9	267.5	263.8	-3.7	-1.4%	12.9	5.1%
Forestry, Fishing, Mining, Quarrying, Oil and Gas	328.3	323.1	324.4	1.3	0.4%	-3.9	-1.2%
Utilities	144.2	145.4	150.0	4.6	3.2%	5.8	4.0%
Construction	1,496.5	1,595.1	1,610.9	15.8	1.0%	114.4	7.6%
Manufacturing	1,783.5	1,784.5	1,791.8	7.3	0.4%	8.3	0.5%
Services-Producing Sector	15,282.6	15,766.8	15,891.5	124.7	0.8%	608.9	4.0%
Wholesale and retail trade	2,991.6	2,901.2	2,959.9	58.7	2.0%	-31.7	-1.1%
Transportation and Warehousing	1,003.9	983.9	967.3	-16.6	-1.7%	-36.6	-3.6%
Finance, Insurance, Real Estate and Leasing	1,351.2	1,397.2	1,394.2	-3.0	-0.2%	43.0	3.2%
Professional, Scientific and Technical Services	1,713.8	1,867.4	1,866.9	-0.5	0.0%	153.1	8.9%
Business, Building and Other Support Services	686.1	711.6	704.9	-6.7	-0.9%	18.8	2.7%
Educational Services	1,476.0	1,462.8	1,481.2	18.4	1.3%	5.2	0.4%
Health Care and Social Assistance	2,588.8	2,597.5	2,637.5	40.0	1.5%	48.7	1.9%
Information, Culture and Recreation	745.6	830.0	839.5	9.5	1.1%	93.9	12.6%
Accommodation and Food Services	906.0	1,102.4	1,114.8	12.4	1.1%	208.8	23.0%
Other Services	710.8	735.9	752.1	16.2	2.2%	41.3	5.8%
Public Administration	1,108.7	1,177.0	1,173.2	-3.8	-0.3%	64.5	5.8%

## Unemployment Rates for Key Markets

	January 2022	December 2022	January 2023
<b>Calgary</b>	8.5%	6.3%	6.6%
<b>Alberta</b>	6.8%	5.6%	6.0%
<b>Canada</b>	6.5%	5.0%	5.0%
<b>Montreal</b>	5.2%	4.4%	4.5%
<b>Ottawa</b>	4.7%	4.0%	3.8%
<b>Toronto</b>	7.7%	4.0%	3.8%
<b>Edmonton</b>	6.6%	5.5%	5.6%
<b>Vancouver</b>	5.7%	4.7%	4.6%
<b>Winnipeg</b>	5.0%	4.4%	4.3%
<b>Regina</b>	5.3%	5.0%	4.8%
<b>Saskatoon</b>	5.2%	4.2%	4.1%
<b>Wood Buffalo</b>			



# Facts & Figures

**Highest Unemployment Rate during 2008-2010 downturn:** 7.5% in January 2010

**Highest Unemployment Rate during 1992-1996 downturn:** 10.8% in July 1993  
Number of additional jobs we would need to lose to reach this level: 39,164  
(or amount labour force would need to grow by with no additional new jobs)

**Highest Unemployment Rate during 1982-1985 downturn:** 13.2% in March 1983  
Number of additional jobs we would need to lose to reach this level: 61,556  
(or amount labour force would need to grow by with no additional new jobs)

## The last time Calgary had negative employment growth:

Between November 2009 and May 2010 Calgary lost 12,900 jobs.  
Between November 2008 and July 2009 Calgary lost 27,000 jobs.  
From peak employment in November 2008 to the lowest level reached in May 2010 - 33,400 jobs were lost in Calgary.

Calgary lost a small number of jobs July-August 2012 (2,400), again in March 2013 (3,200), and again (3,300) in February to April 2014.

## Calgary

<b>Number of jobs gained/lost in 2014:</b>	11,300
<b>Number of jobs gained/lost in 2015:</b>	(16,200)
<b>Number of jobs gained/lost December 2014 to June 2016:</b>	(23,100)
<b>Number of jobs gained/lost in 2016:</b>	12,700
<b>Number of jobs gained/lost in 2017:</b>	14,400
<b>Number of jobs gained/lost in 2018:</b>	8,800
<b>Number of jobs gained/lost in 2019:</b>	14,400
<b>Number of jobs gained/lost in 2020:</b>	(5,600)
<b>Number of jobs gained/lost in 2021:</b>	7,100
<b>Number of jobs gained/lost in 2022:</b>	51,700
<b>Number of jobs gained/lost in 2023 (to-date):</b>	(8,500)

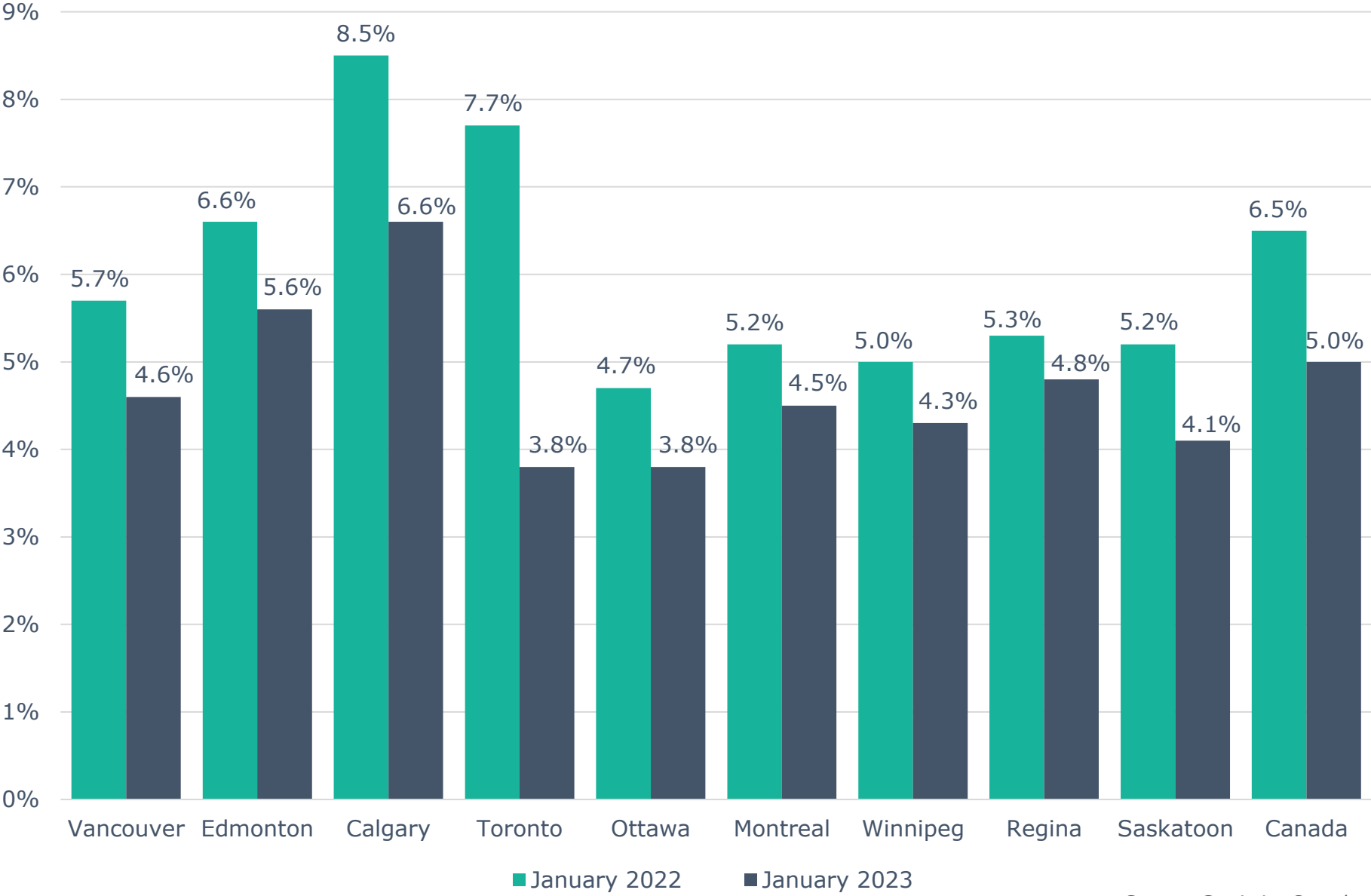
## Alberta

<b>Number of jobs gained/lost in 2014:</b>	49,800
<b>Number of jobs gained/lost in 2015:</b>	(39,300)
<b>Number of jobs gained/lost December 2014 to June 2016:</b>	(67,000)
<b>Number of jobs gained/lost in 2016:</b>	(26,100)
<b>Number of jobs gained/lost in 2017:</b>	62,800
<b>Number of jobs gained/lost in 2018:</b>	29,500
<b>Number of jobs gained/lost in 2019:</b>	15,900
<b>Number of jobs gained/lost in 2020:</b>	(131,100)
<b>Number of jobs gained/lost in 2021:</b>	146,900
<b>Number of jobs gained/lost in 2022:</b>	81,800
<b>Number of jobs gained/lost in 2023 (to-date):</b>	20,700

Source: Calgary - Table 14-10-0294-02 (282-0135); Alberta - 14-10-0287-01 (282-0087); Statistics Canada

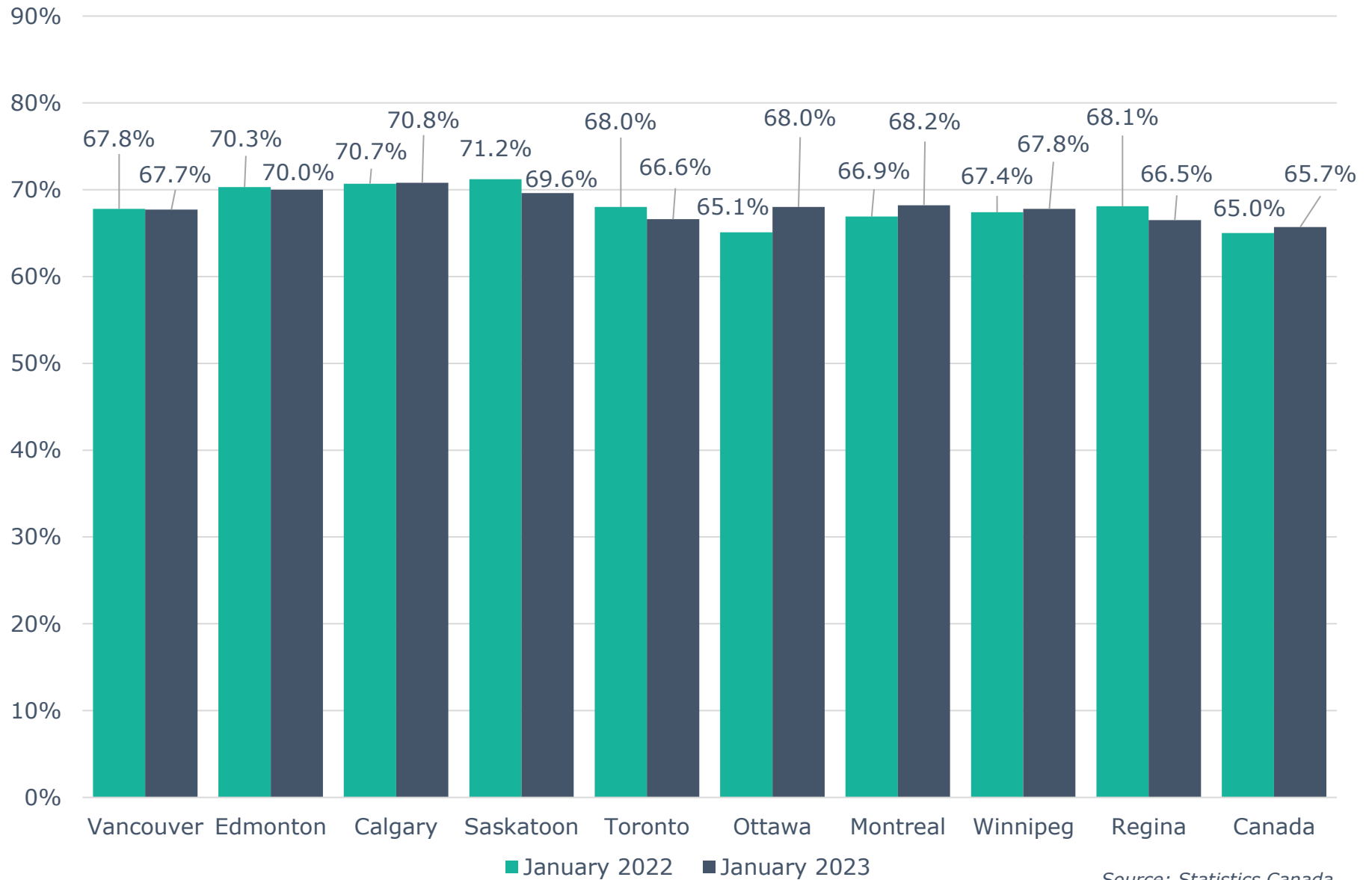
Note: Labour Force Survey, Employment, Seasonally Adjusted

# Unemployment Rate Across Canada



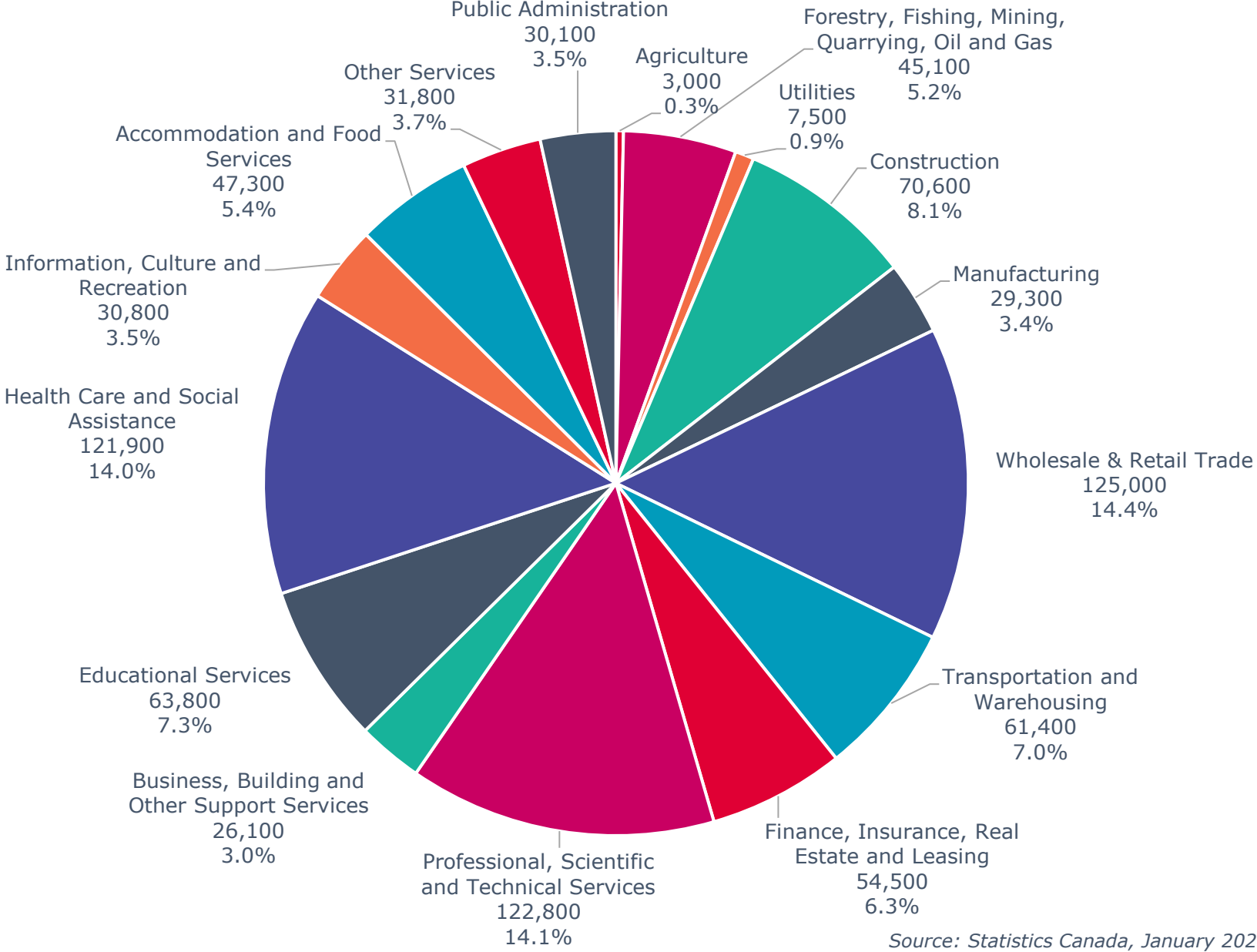
Source: Statistics Canada

# Labour Force Participation Rate Across Canada



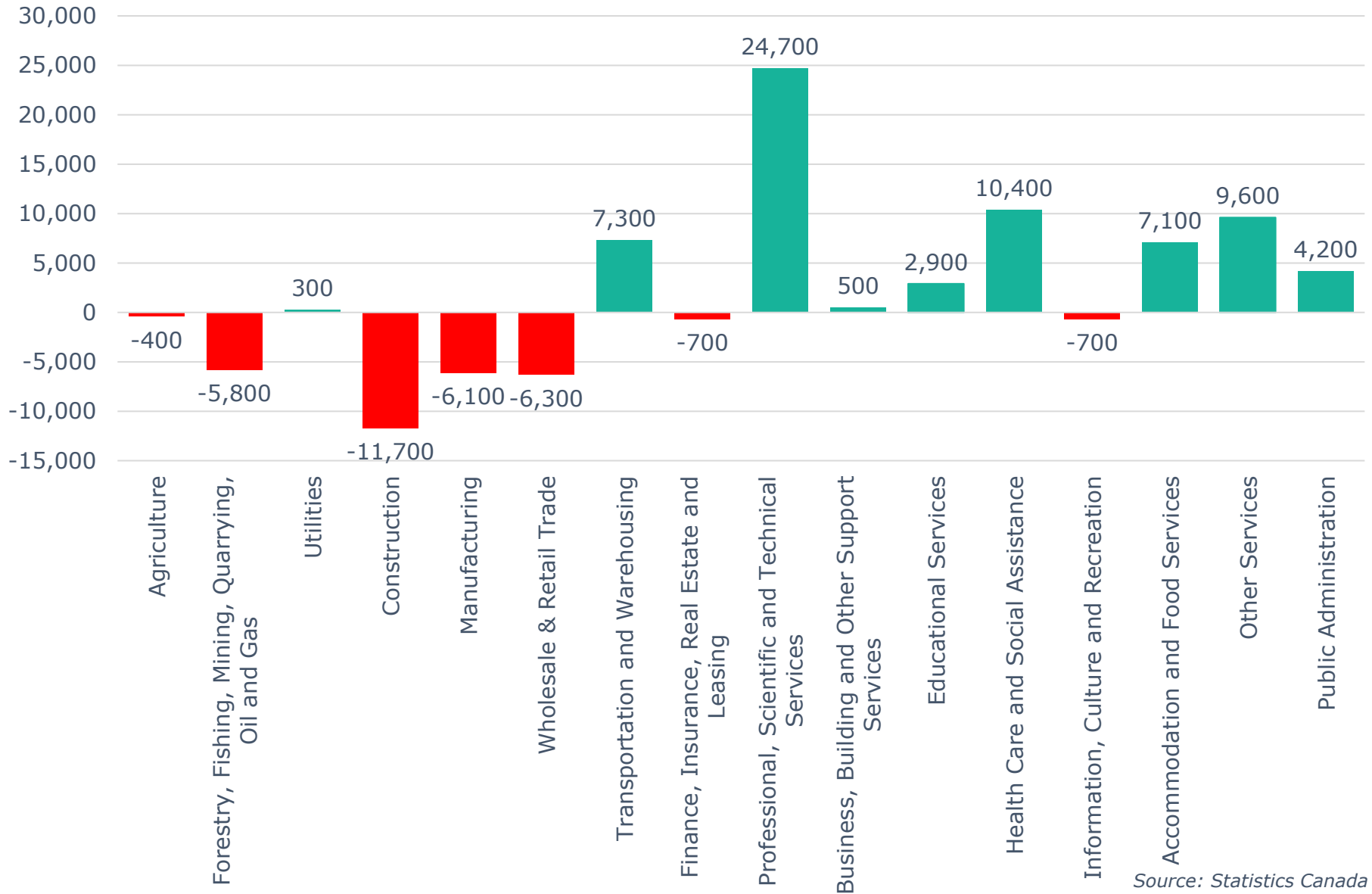
Source: Statistics Canada

# Calgary CMA Employment by Industry (871,000)



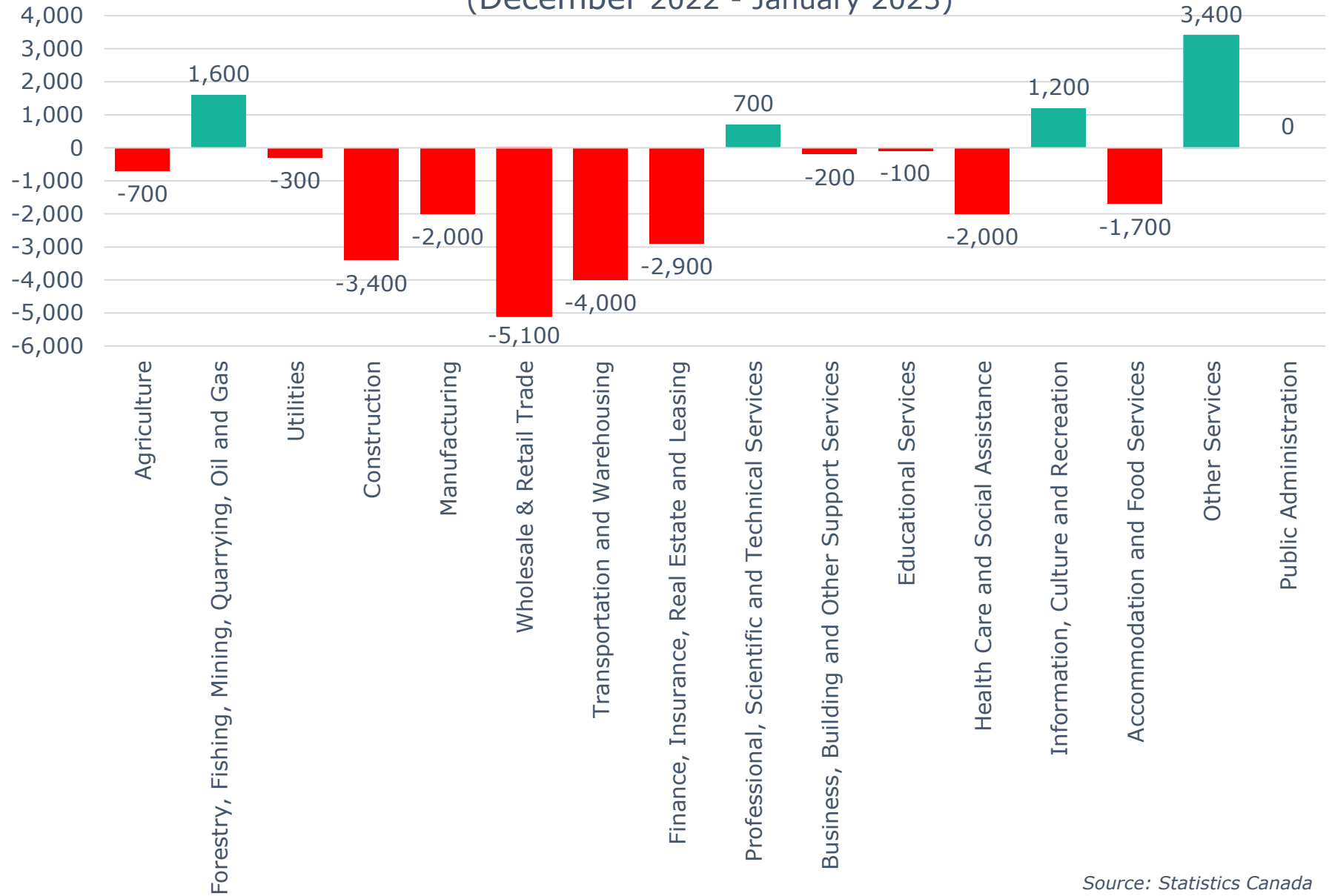
Source: Statistics Canada, January 2023

# Calgary CMA 12-Month Net Jobs Gained or Lost by Industry (January 2023)



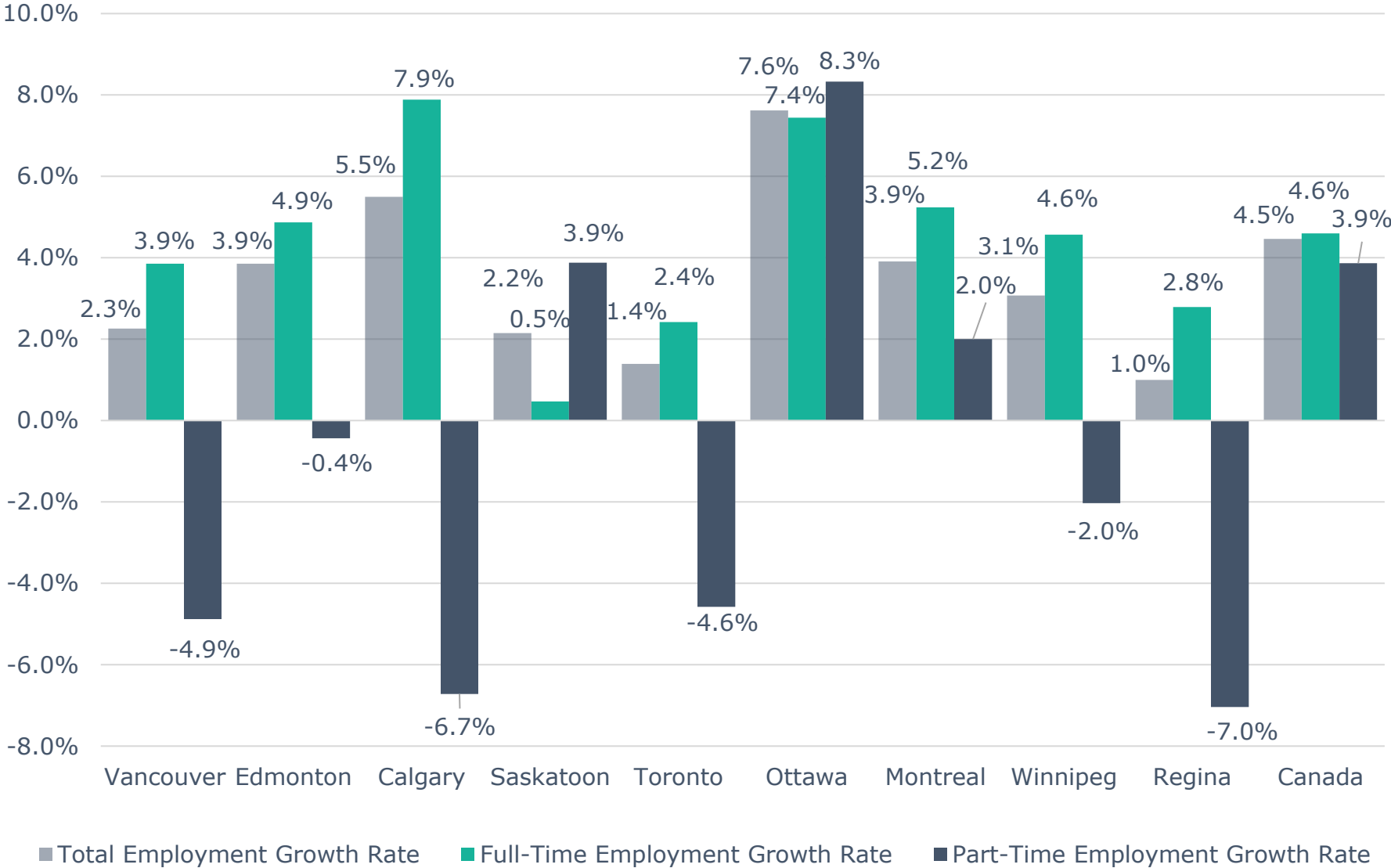
Source: Statistics Canada

## Calgary CMA Monthly Net Jobs Gained or Lost by Industry (December 2022 - January 2023)



Source: Statistics Canada

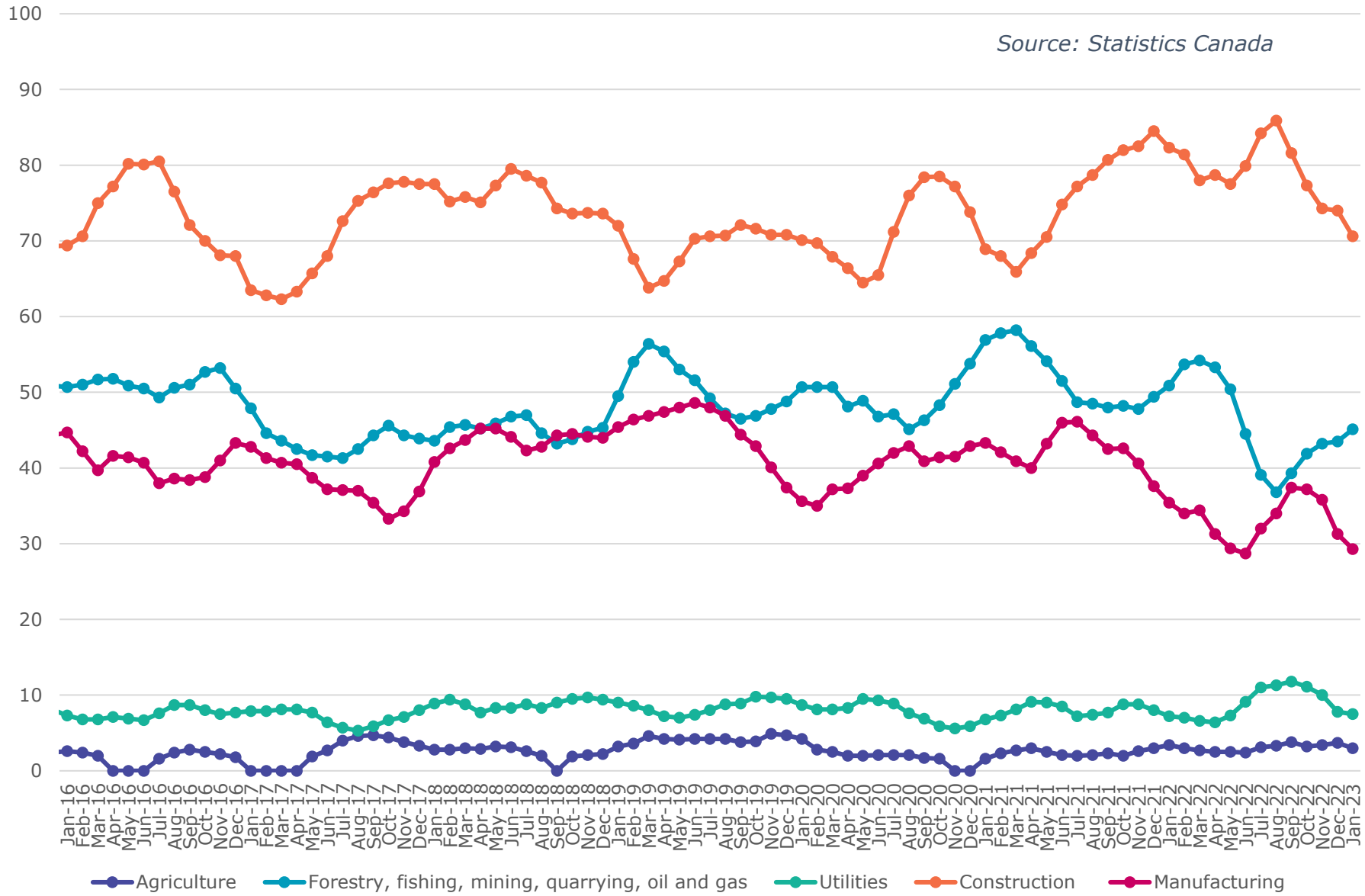
# Annual Employment Growth



Source: Statistics Canada, January 2022 - January 2023

# Calgary CMA Goods Producing Sectors - Number of Employees (In thousands)

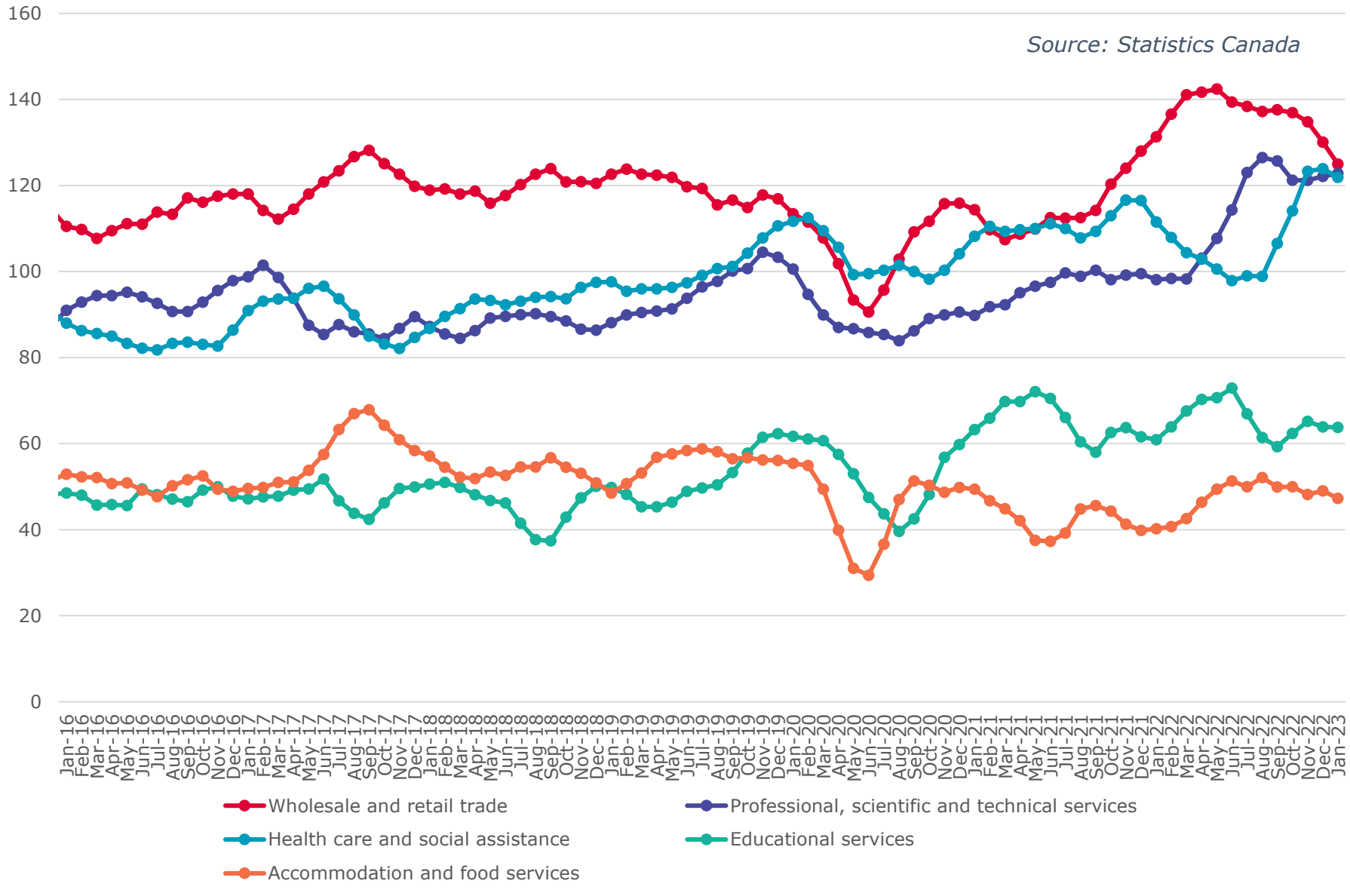
Source: Statistics Canada





# Calgary CMA Largest 5 Services Sector by Number of Employees (In thousands)

Source: Statistics Canada



## Calgary CMA Smallest 6 Service Sectors by Number of Employees (In thousands)

*Source: Statistics Canada*

